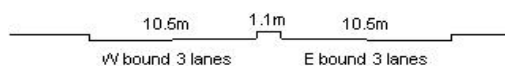
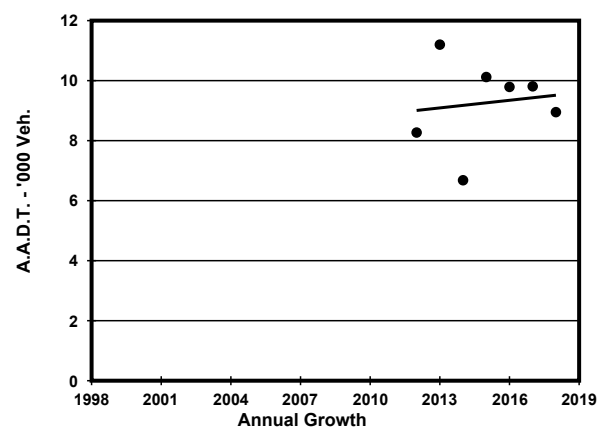
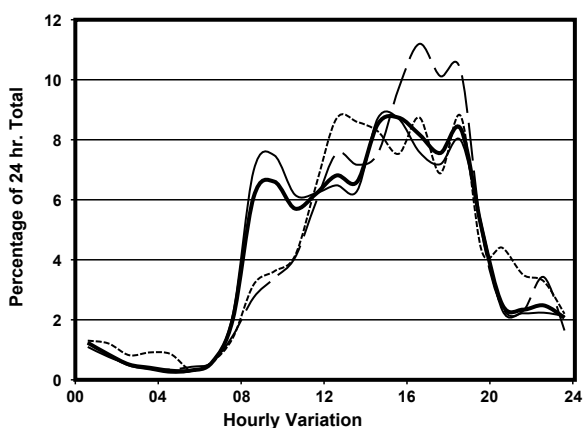
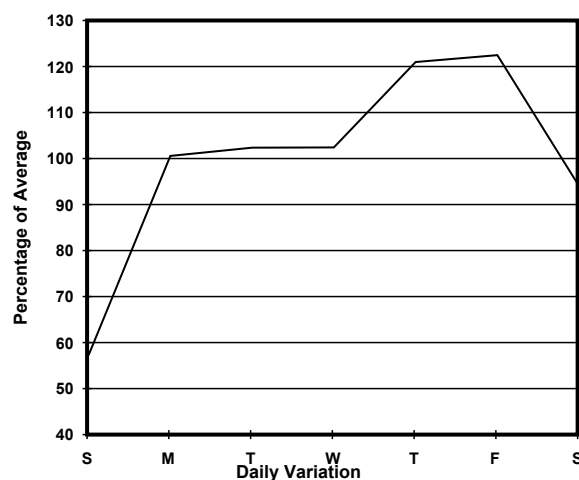
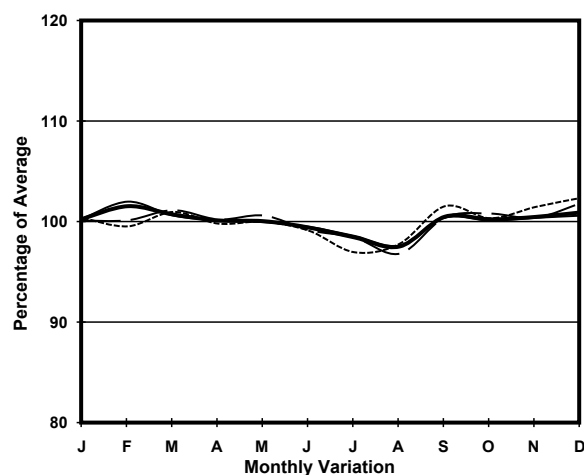


YEAR 2018
 COVERAGE (B) STATION 2408
 ROAD NETWORK MINOR
 ROAD TYPE DISTRICT DISTRIBUTOR

LINK LUNG WUI RD (from TIM MEI AVE to LUNG KING ST)



1. TRAFFIC FLOW VARIATION AND GROWTH



2. TRAFFIC CHARACTERISTICS (BY DIRECTION)

Parameter	All - Day	Mon. - Fri.	Sat.	Sun.
EAST BOUND				
A.A.D.T.	5600	6340	5290	3160
R 12 / 24 - %	82.1	83	80.7	75.2
R 16 / 24 - %	94.7	95.2	94.4	90.8
AM Peak Hour	0900-1000	0800-0900	0900-1000	0900-1000
One-way flow at AM peak hour	360	460	170	110
T - % (AM)	-	12.5	-	-
PM Peak Hour	1800-1900	1800-1900	1800-1900	1800-1900
One-way flow at PM peak hour	510	550	600	280
T - % (PM)	-	13.3	-	-
Prop.of commercial vehicles - 16 hr.	-	8.3	-	-
WEST BOUND				
A.A.D.T.	3350	3720	3320	2080
R 12 / 24 - %	80.2	80.2	81.8	78
R 16 / 24 - %	92.2	91.7	94	93.3
AM Peak Hour	0900-1000	0900-1000	0900-1000	0900-1000
One-way flow at AM peak hour	230	300	120	80
T - % (AM)	-	3.5	-	-
PM Peak Hour	1600-1700	1600-1700	1600-1700	1600-1700
One-way flow at PM peak hour	290	290	420	220
T - % (PM)	-	16.8	-	-
Prop.of commercial vehicles - 16 hr.	-	7.4	-	-

3. OTHER INFORMATION AND COMMENT

4. Vehicle classification and occupancy - Monday to Friday

Time		Class of vehicle									
		Motor Cycle	Private Car	Taxi	Private LB	PLB	Goods veh.		Non Fr. Bus	Fr. Bus	
							Light	M & H		SD	DD
0700-0800	Pro	2.4	29.1	26.7	0.0	0.0	9.7	9.7	17.0	0.0	5.5
	Ocp	1.0	1.5	1.7	0.0	0.0	2.0	1.0	5.0	0.0	12.9
0800-0900	Pro	1.6	50.0	21.9	0.8	0.0	14.1	0.8	8.6	0.0	2.3
	Ocp	1.0	1.3	1.9	8.0	0.0	1.2	1.0	14.9	0.0	22.7
0900-1000	Pro	2.2	50.0	31.7	0.6	0.0	10.0	0.6	2.2	0.0	2.8
	Ocp	1.0	1.4	1.9	1.0	0.0	1.6	2.0	6.5	0.0	10.0
1000-1100	Pro	1.6	35.8	31.6	0.5	0.0	23.3	2.6	3.1	0.0	1.4
	Ocp	1.0	1.5	1.7	2.0	0.0	1.4	1.4	4.3	0.0	7.7
1100-1200	Pro	1.5	48.9	27.8	0.0	0.0	14.3	3.8	2.3	0.0	1.5
	Ocp	1.0	1.5	1.9	0.0	0.0	1.6	2.8	1.0	0.0	7.6
1200-1300	Pro	2.3	49.7	29.1	0.8	0.0	10.7	1.5	4.6	0.0	1.3
	Ocp	1.0	1.5	2.0	1.0	0.0	1.4	1.0	11.7	0.0	8.0
1300-1400	Pro	0.9	72.1	19.2	0.4	0.0	3.5	0.0	3.1	0.0	0.8
	Ocp	1.0	1.1	1.7	3.0	0.0	1.6	0.0	5.4	0.0	7.4
1400-1500 Peak hour	Pro	1.0	28.5	45.0	0.0	0.0	18.4	0.5	5.8	0.0	0.8
	Ocp	1.0	1.4	2.0	0.0	0.0	1.6	3.0	10.4	0.0	9.4
1500-1600	Pro	0.0	46.1	30.2	2.0	0.0	15.4	1.0	4.1	0.0	1.2
	Ocp	0.0	1.3	2.3	3.5	0.0	1.5	1.5	10.8	0.0	5.8
1600-1700	Pro	2.8	53.9	16.3	1.1	0.0	14.6	5.6	4.5	0.0	1.3
	Ocp	1.0	1.6	1.8	2.0	0.0	1.9	1.4	3.1	0.0	6.1
1700-1800	Pro	4.7	55.0	21.3	3.0	0.0	8.9	1.2	4.7	0.0	1.2
	Ocp	1.3	1.4	2.2	1.8	0.0	1.5	1.0	17.0	0.0	6.1
1800-1900	Pro	2.0	56.1	25.4	0.7	0.0	3.9	1.3	9.8	0.0	0.8
	Ocp	1.0	1.5	2.1	4.0	0.0	1.7	1.0	17.0	0.0	6.2
1900-2000	Pro	0.0	72.0	17.8	0.0	0.0	2.5	0.0	5.1	0.0	2.5
	Ocp	0.0	1.4	2.6	0.0	0.0	1.3	0.0	11.8	0.0	4.3
2000-2100	Pro	0.0	56.8	37.0	0.0	0.0	1.3	1.3	1.3	0.0	2.3
	Ocp	0.0	1.5	2.1	0.0	0.0	1.0	1.0	42.0	0.0	3.6
2100-2200	Pro	0.0	54.8	32.5	0.0	0.0	2.0	2.0	4.1	0.0	4.6
	Ocp	0.0	1.4	1.6	0.0	0.0	1.0	3.0	15.5	0.0	1.4
2200-2300	Pro	1.6	39.3	44.3	0.0	0.0	9.8	1.6	1.6	0.0	1.6
	Ocp	1.0	1.3	1.8	0.0	0.0	1.0	1.0	6.0	0.0	2.5
16 hours	Pro	1.6	50.6	27.8	0.8	0.0	11.2	1.7	4.7	0.0	1.6
	Ocp	1.1	1.4	2.0	2.7	0.0	1.5	1.6	10.8	0.0	8.3

Legend

Pro. Proportion of vehicles in % (Sum may not add up to 100% due to figure rounding)*

Ocp. Average occupancy of vehicles including both driver and passengers*

M&H Medium and Heavy

***** All traffic data are collected from combined bounds except for one way traffic